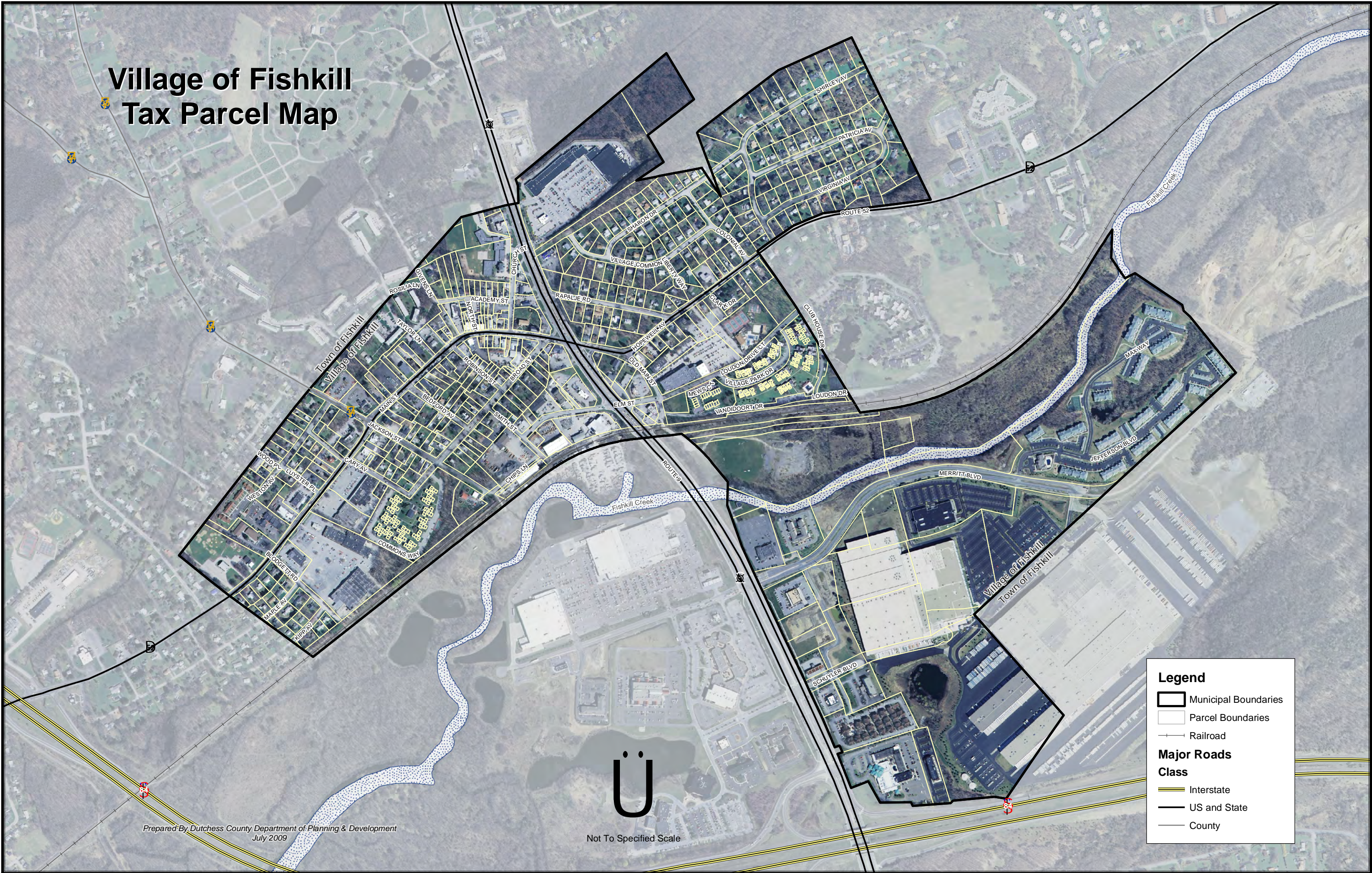


# Village of Fishkill Tax Parcel Map



Prepared By Dutchess County Department of Planning & Development  
July 2009

Ü  
Not To Specified Scale

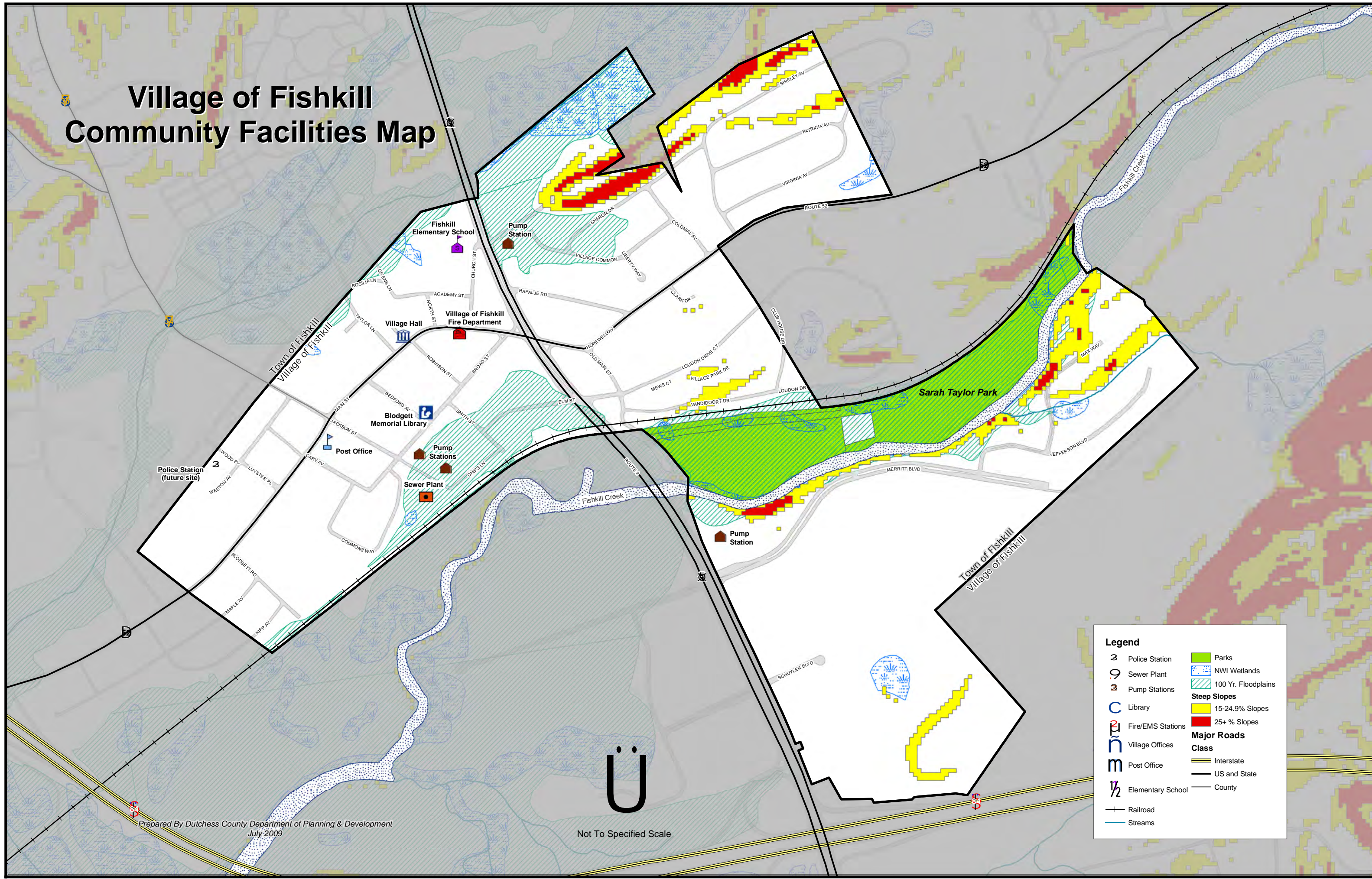
**Legend**

- Municipal Boundaries
- Parcel Boundaries
- Railroad

**Major Roads Class**

- Interstate
- US and State
- County

# Village of Fishkill Community Facilities Map

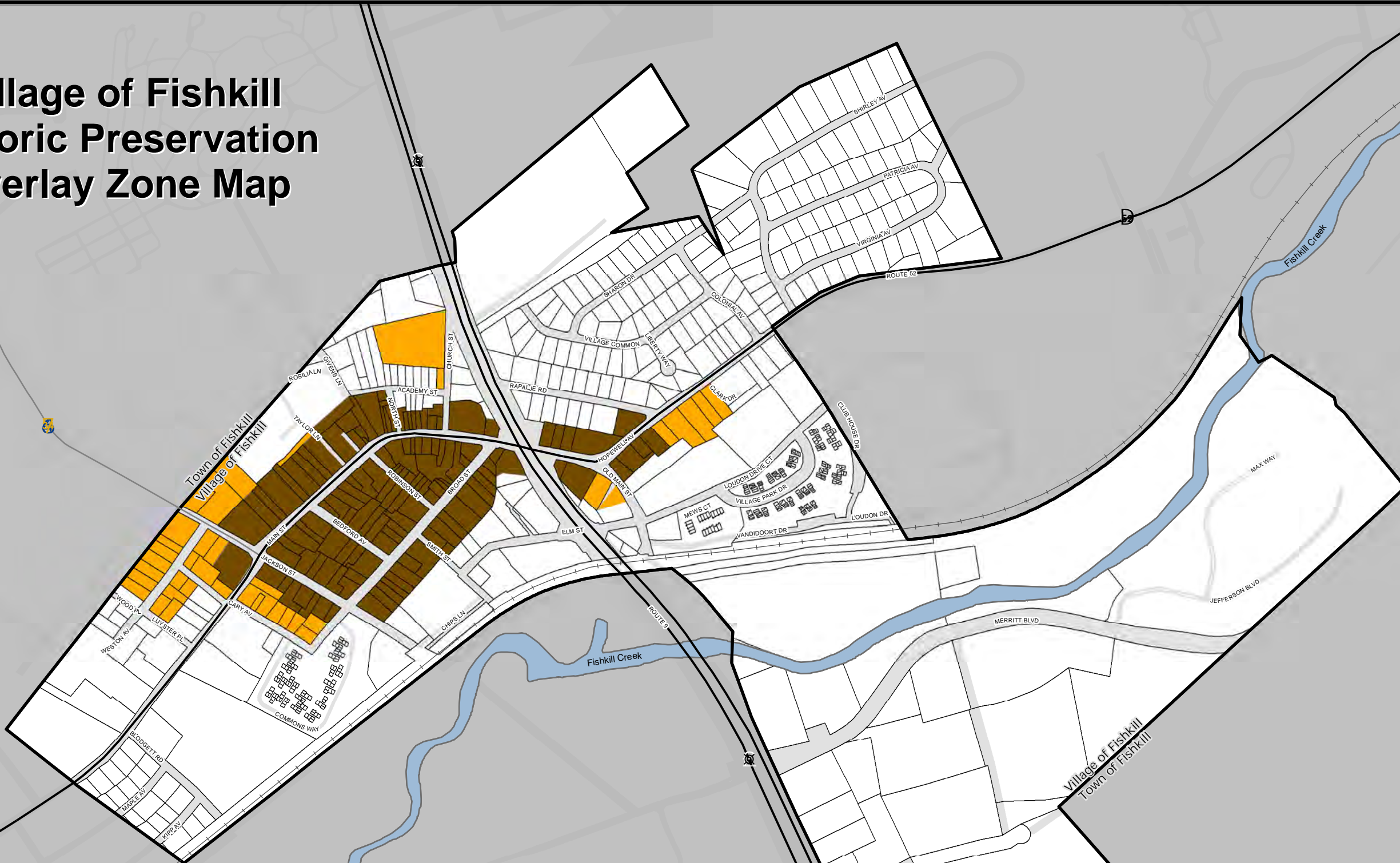


Legend	
	Police Station
	Sewer Plant
	Pump Stations
	Library
	Fire/EMS Stations
	Village Offices
	Post Office
	Elementary School
	Parks
	NW1 Wetlands
	100 Yr. Floodplains
<b>Steep Slopes</b>	
	15-24.9% Slopes
	25+ % Slopes
<b>Major Roads</b>	
<b>Class</b>	
	Interstate
	US and State
	County
	Railroad
	Streams

Prepared By Dutchess County Department of Planning & Development  
July 2009

Not To Specified Scale

# Village of Fishkill Historic Preservation Overlay Zone Map



**Legend**

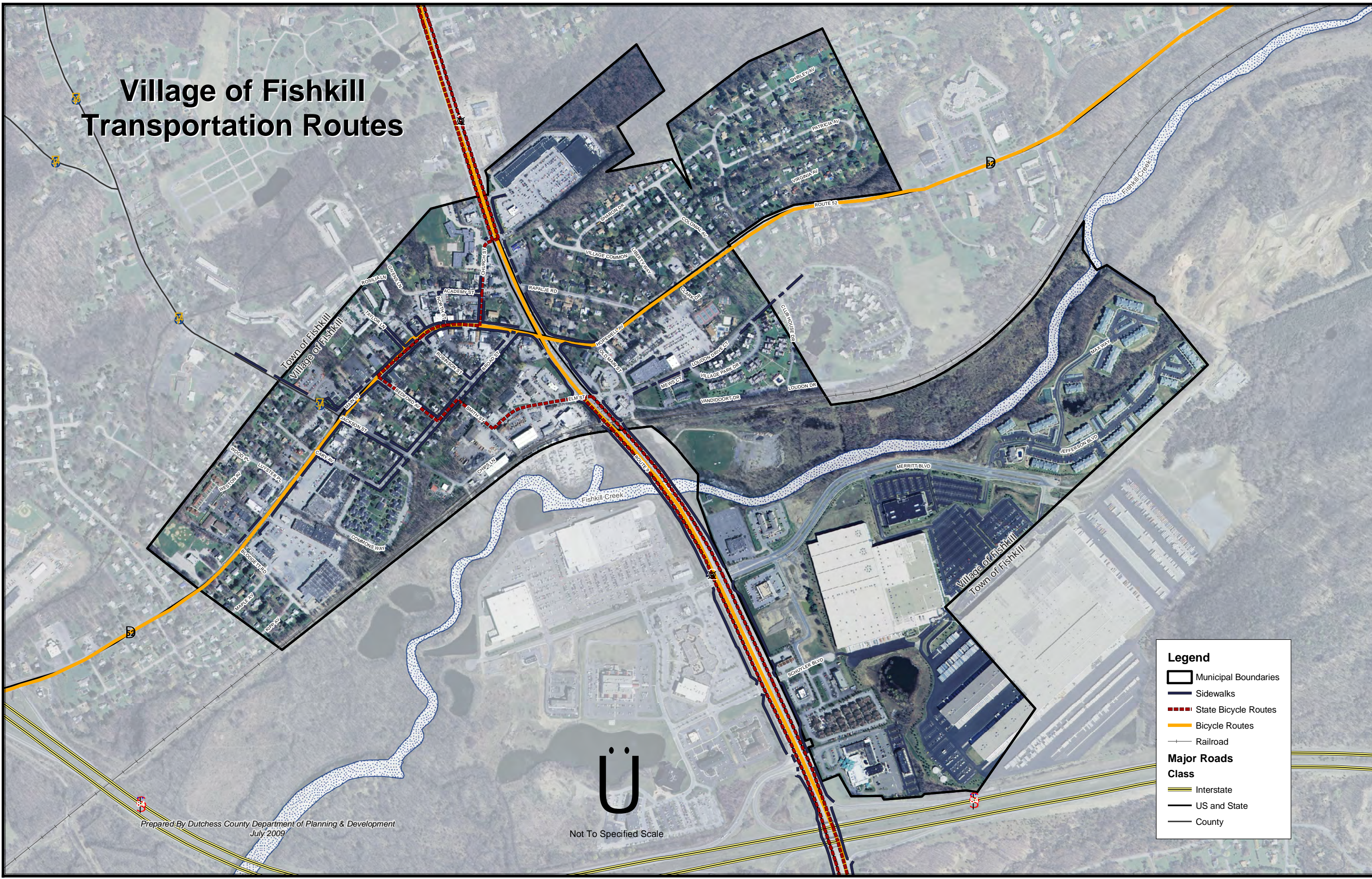
- Municipal Boundaries
- Parcel Boundaries
- Railroad
- Parcels Proposed for Inclusion in the Historic Preservation Overlay Zone
- Existing Historic Preservation Overlay Zone

**Major Roads**

**Class**

- Interstate
- US and State
- County

# Village of Fishkill Transportation Routes



**Legend**

- Municipal Boundaries
- Sidewalks
- State Bicycle Routes
- Bicycle Routes
- Railroad

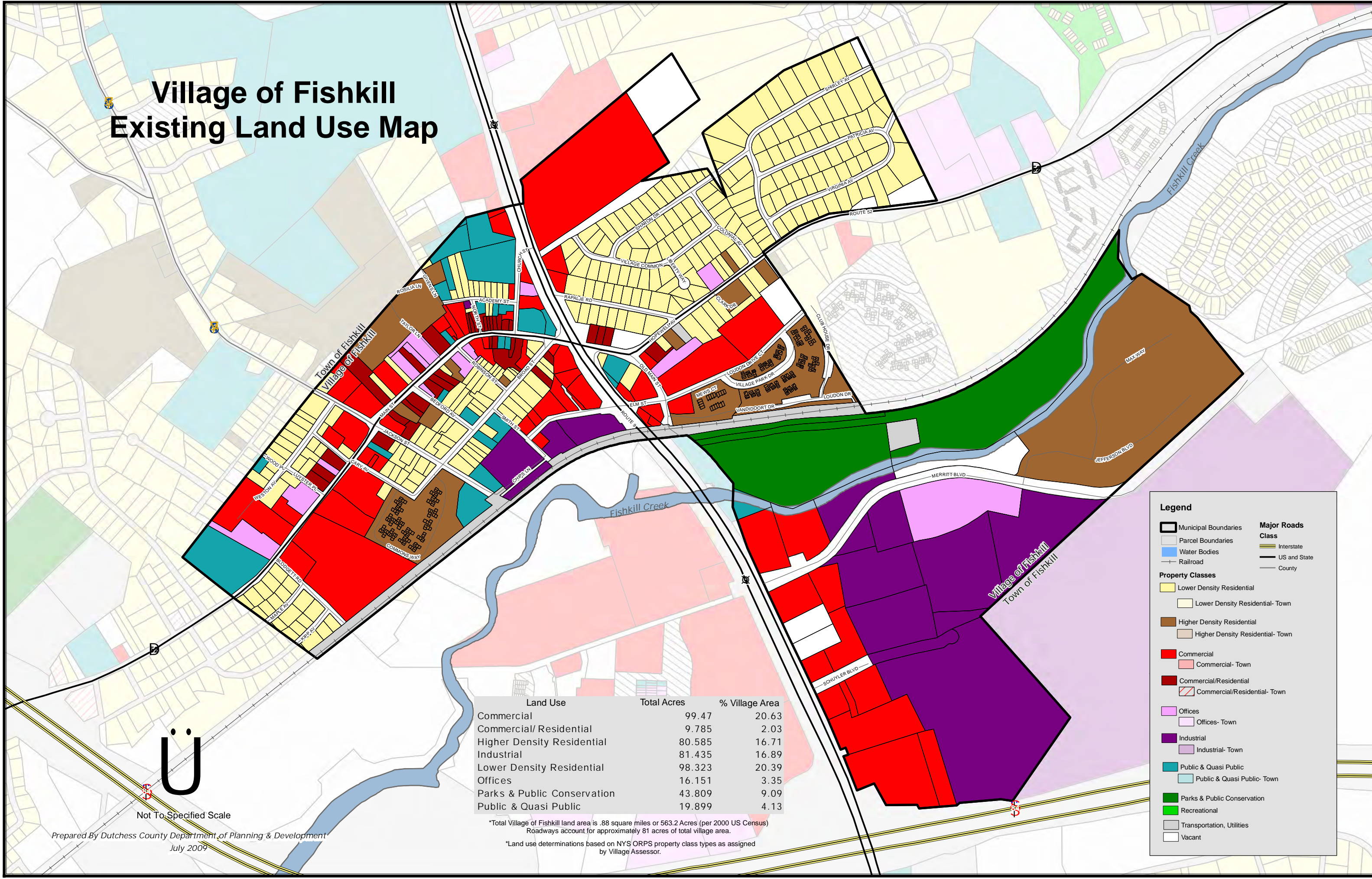
**Major Roads Class**

- Interstate
- US and State
- County

Prepared By Dutchess County Department of Planning & Development  
July 2009

Ü  
Not To Specified Scale

# Village of Fishkill Existing Land Use Map



Land Use	Total Acres	% Village Area
Commercial	99.47	20.63
Commercial/ Residential	9.785	2.03
Higher Density Residential	80.585	16.71
Industrial	81.435	16.89
Lower Density Residential	98.323	20.39
Offices	16.151	3.35
Parks & Public Conservation	43.809	9.09
Public & Quasi Public	19.899	4.13

\*Total Village of Fishkill land area is .88 square miles or 563.2 Acres (per 2000 US Census)  
 Roadways account for approximately 81 acres of total village area.  
 \*Land use determinations based on NYS ORPS property class types as assigned by Village Assessor.

**Legend**

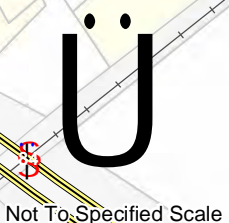
- Municipal Boundaries
- Parcel Boundaries
- Water Bodies
- Railroad

**Major Roads Class**

- Interstate
- US and State
- County

**Property Classes**

- Lower Density Residential
- Lower Density Residential- Town
- Higher Density Residential
- Higher Density Residential- Town
- Commercial
- Commercial- Town
- Commercial/Residential
- Commercial/Residential- Town
- Offices
- Offices- Town
- Industrial
- Industrial- Town
- Public & Quasi Public
- Public & Quasi Public- Town
- Parks & Public Conservation
- Recreational
- Transportation, Utilities
- Vacant



# Village of Fishkill Future Enhancement Projects

Enhance Gateway Locations

Expand Historic Preservation Overlay District

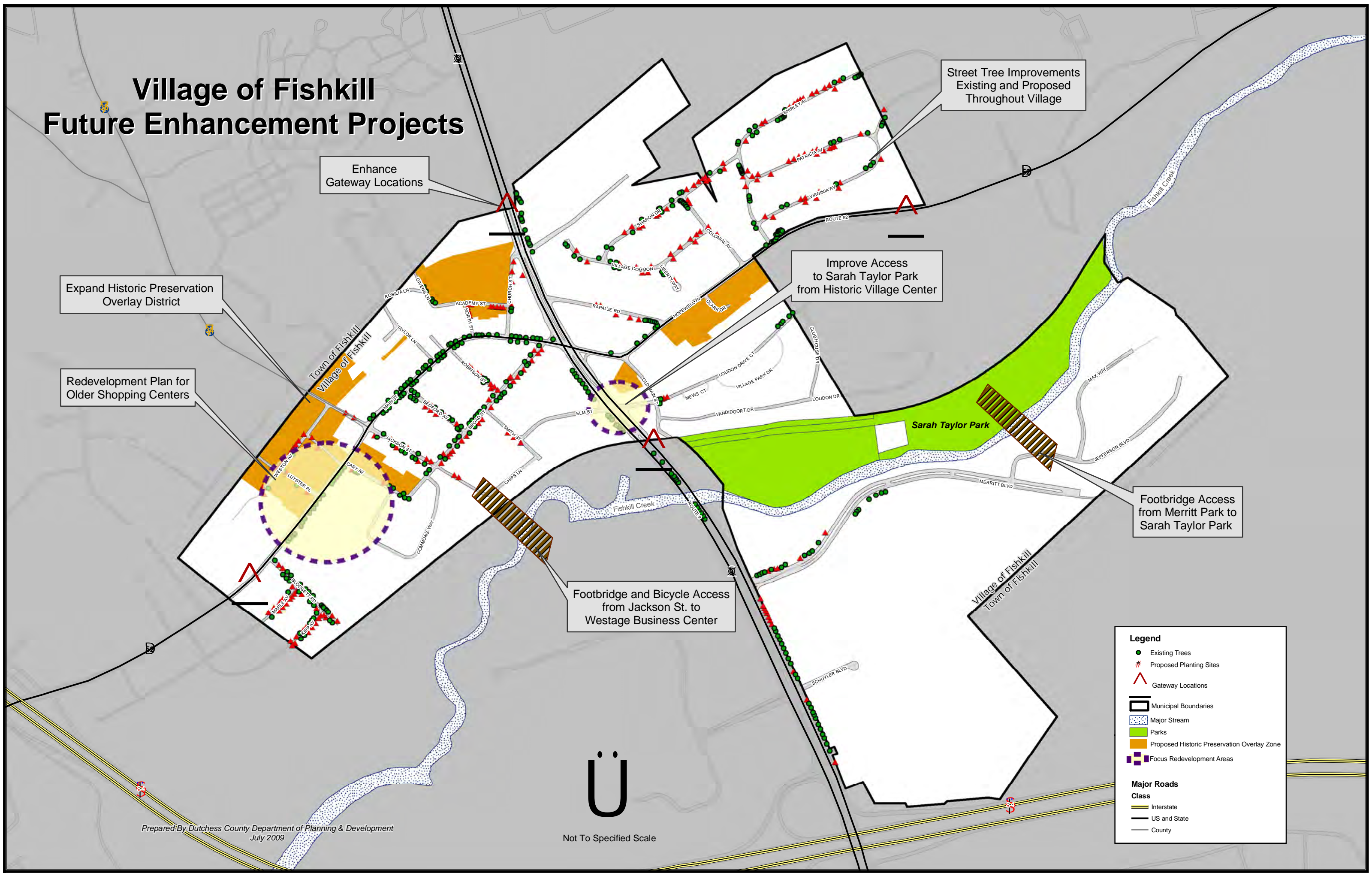
Redevelopment Plan for Older Shopping Centers

Street Tree Improvements Existing and Proposed Throughout Village

Improve Access to Sarah Taylor Park from Historic Village Center

Footbridge Access from Merritt Park to Sarah Taylor Park

Footbridge and Bicycle Access from Jackson St. to Westage Business Center



**Legend**

- Existing Trees
- ▲ Proposed Planting Sites
- ▲ Gateway Locations
- ▭ Municipal Boundaries
- ▨ Major Stream
- Parks
- Proposed Historic Preservation Overlay Zone
- ▨ Focus Redevelopment Areas

**Major Roads**

**Class**

- Interstate
- US and State
- County