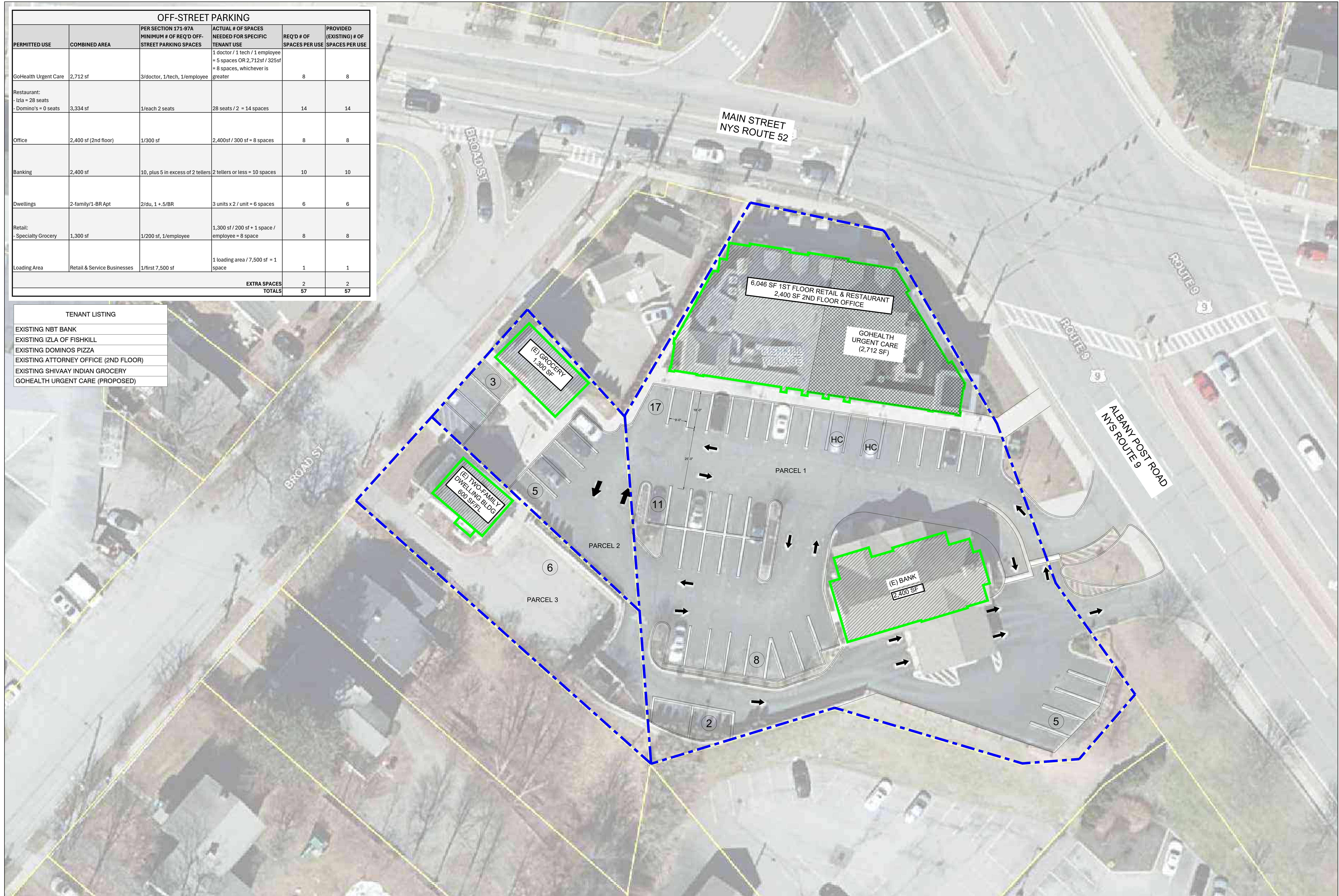
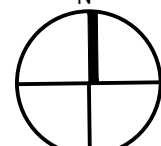


OFF-STREET PARKING					
PERMITTED USE	COMBINED AREA	PER SECTION 171-97A MINIMUM # OF REQ'D OFF-STREET PARKING SPACES	ACTUAL # OF SPACES NEEDED FOR SPECIFIC TENANT USE	REQ'D # OF SPACES PER USE	PROVIDED (EXISTING) # OF SPACES PER USE
GoHealth Urgent Care	2,712 sf	3/doctor, 1/tech, 1/employee	1 doctor / 1 tech / 1 employee = 5 spaces OR 2,712sf / 325sf = 8 spaces, whichever is greater	8	8
Restaurant: Izla = 28 seats Domino's = 0 seats	3,334 sf	1/each 2 seats	28 seats / 2 = 14 spaces	14	14
Office	2,400 sf (2nd floor)	1/300 sf	2,400sf / 300 sf = 8 spaces	8	8
Banking	2,400 sf	10, plus 5 in excess of 2 tellers	2 tellers or less = 10 spaces	10	10
Dwellings	2-family/1-BR Apt	2/du, 1 +.5/BR	3 units x 2 / unit = 6 spaces	6	6
Retail: Specialty Grocery	1,300 sf	1/200 sf, 1/employee	1,300 sf / 200 sf + 1 space / employee = 8 space	8	8
Loading Area	Retail & Service Businesses	1/first 7,500 sf	1 loading area / 7,500 sf = 1 space	1	1
EXTRA SPACES				2	2
TOTALS				57	57

- TENANT LISTING**
- EXISTING NBT BANK
 - EXISTING IZLA OF FISHKILL
 - EXISTING DOMINOS PIZZA
 - EXISTING ATTORNEY OFFICE (2ND FLOOR)
 - EXISTING SHIVAAY INDIAN GROCERY
 - GOHEALTH URGENT CARE (PROPOSED)



TENANT IMPROVEMENT PROJECT - FISHKILL
 PREVIOUS TENANT: VACANT + AT&T
 PROPOSED TENANT: GOHEALTH URGENT CARE

 SITE PLAN (FOR REFERENCE ONLY)
 SCALE: 1/16" = 1'-0"



P:\PLAN\57-25145-00\Drawings\SitePlan\SitePlan.dwg, 9/5/2024 4:23 PM

